



# Arlington Family Connection

supporting children six and under and those who care for them

Volume VII, Issue 9 • December, 2008

[www.arlingtonfamilyconnection.org](http://www.arlingtonfamilyconnection.org)



**Mondays (including holidays)  
10:00–11:30 a.m.  
Dance Place, 174 Broadway, Arlington  
AFC Playtime Is Back!**

Our drop-in playgroup has a new home at the Dance Place on Broadway. Come socialize with other families and watch your little ones play in a contained space with age-appropriate toys. Each session ends with circle time, including songs and stories.

Playtime is for children 0 – 4 and their parents or caregivers. The cost is \$3 per family. Open to AFC members and non-members, so feel free to bring your friends!

Info: Glendalys at 617-308-3349 or email [playgroup@arlingtonfamilyconnection.org](mailto:playgroup@arlingtonfamilyconnection.org)

## Holiday Gift Drive and Sing-Along

Arlington Family Connection is excited to participate in a clothing and toy drive for Room to Grow (RTG) this holiday season. RTG is an innovative program that provides parents who are raising babies in poverty with one-on-one parenting support and essential baby items throughout their children's first three years of life. Isis Maternity, our partner in this initiative, will serve as a drop-off spot.

We are asking our members to donate a new or nearly new unwrapped baby or toddler item. Some suggested items are winter coats and outerwear, basic clothing, toys, books, blankets, high chairs, and strollers. Please remember to donate items suitable for a child under three, and in new or excellent condition. You can drop off donations anytime from Dec. 1 to Dec. 21 at Isis Maternity, located at 397 Mass. Ave. in Arlington Center.

Isis will also host a sing-along for AFC members on Monday, Dec. 15. From 3:30 to 4:30 p.m., join Su-Ann Chong, Isis's popular Kindermusik instructor, in fun songs and holiday cheer. We ask each participant to bring a donation that will serve as your ticket to the sing-along. Isis will be giving 10% discounts (20% for members) for those buying a toy or book for donation during the holiday season. Space is limited, so please RSVP by Dec. 14

For questions and to RSVP, contact Lauren Boyle at 781-777-4052 or email [community@arlingtonfamilyconnection.org](mailto:community@arlingtonfamilyconnection.org)

## **Give the Gift of AFC!**

*An Arlington Family Connection membership makes a great gift for a new baby, new neighbor, or new friend!*

*See the back page of this newsletter for a membership form, or visit [www.arlingtonfamilyconnection.org](http://www.arlingtonfamilyconnection.org) to print out a form.*

## Create Memories at “Family Trees” Exhibit

by Amy Speare

If you're like me, there is nothing more enjoyable than sitting with your kids and reading a good book. From Dec. 5 through Jan. 4, the Concord Museum in Concord provides a unique and special setting in which to do this. Their annual “Family Trees” exhibit is a must-see this holiday season.

Whether you celebrate Christmas, Hanukkah, Kwanzaa, or none of the above, you and your kids will enjoy wandering through the exhibits and playing “I Spy” on trees of all shapes and sizes decorated with charm and inspiration from acclaimed classic and contemporary children's books. Each tree is decorated with characters and items from one of the featured stories.

This year, long-time favorites such as *Cloudy With a Chance of Meatballs*, *Goodnight Moon*, *The Very Hungry Caterpillar*, and *The Snowy Day* serve as inspiration. Discover new titles and even decorate (and redecorate) a kid-sized tree yourselves!

**TIP:** Review the list of featured titles at [www.concordmuseum.org](http://www.concordmuseum.org) a few days before you plan to visit. Read the books you have in your collection before you go so your kids have a fresh memory of them!

## New AFC Volunteers

AFC welcomes and thanks the following volunteers who have recently joined the AFC team:

**Grace Carpenter** is volunteering as co-editor of the newsletter. Grace lives in the Heights with her husband, six-year-old son, and three-year-old daughter. **Shannon LeMay-Finn** is volunteering as co-editor of the newsletter. Shannon lives way too close to the Arlington Center Starbucks, where she spends time with her two-year-old son, Spencer. Grace and Shannon are taking over from **Carrie Finison**, who worked on the newsletter for two years and is taking a well-deserved break. Thank you Carrie! **Lauren Magoun** will be working as a Membership Co-Chair welcoming new members and answering questions. She and her husband Steve moved to Arlington two years ago and have a 16-month-old son, Jack. **Kelly Chiu** is volunteering as a membership co-chair. She has lived in Arlington for five years with her husband Jeff, and has a three-year-old daughter named Clara. She also works part-time as a pediatrician. She is happy to be part of such a great

resource. Thanks to **Leah Nelson**, our former membership coordinator.

## AFC Directory

**General Information** - Amy Speare, 781-646-5417  
[info@arlingtonfamilyconnection.org](mailto:info@arlingtonfamilyconnection.org)

**AFC Playtime** - Glendalys Ghandi  
[playgroup@arlingtonfamilyconnection.org](mailto:playgroup@arlingtonfamilyconnection.org)

**Book Group** - Shannon LeMay-Finn  
[bookgroup@arlingtonfamilyconnection.org](mailto:bookgroup@arlingtonfamilyconnection.org)

**Clerk** - Eileen Coleman

**Community Service** - Lauren Boyle  
[community@arlingtonfamilyconnection.org](mailto:community@arlingtonfamilyconnection.org)

**Membership** - Kelly Chiu and Lauren Magoun  
[membership@arlingtonfamilyconnection.org](mailto:membership@arlingtonfamilyconnection.org)

**Newsletter Editors** - Grace Carpenter and Shannon LeMay-Finn  
[newsletter@arlingtonfamilyconnection.org](mailto:newsletter@arlingtonfamilyconnection.org)

**Newsletter Calendar** - Aimee Linker and Louise Friel  
[calendar@arlingtonfamilyconnection.org](mailto:calendar@arlingtonfamilyconnection.org)

**Options in Childcare & Preschool booklet** - Kristen Strechay  
[options@arlingtonfamilyconnection.org](mailto:options@arlingtonfamilyconnection.org)

**Outings** - Eileen Coleman and Amy Speare  
[outings@arlingtonfamilyconnection.org](mailto:outings@arlingtonfamilyconnection.org)

**Treasurers** - Catherine Hoffman and Mimi Wan  
[treasurer@arlingtonfamilyconnection.org](mailto:treasurer@arlingtonfamilyconnection.org)

**Web Site** - Seth Maislin  
[webmaster@arlingtonfamilyconnection.org](mailto:webmaster@arlingtonfamilyconnection.org)

**Working Moms** - Su Joun  
[workingmoms@arlingtonfamilyconnection.org](mailto:workingmoms@arlingtonfamilyconnection.org)

**Editorial policy:** The Arlington Family Connection (AFC) newsletter is published monthly and is free with membership. Published articles reflect the views of the respective authors and do not necessarily represent the views of AFC. Childcare, healthcare and legal information is provided for informational purposes only. It is not intended as a substitute for medical or professional advice. Always consult your own healthcare provider for any decisions relating to your child's well being. Copyright remains with the individual author for bylined articles. All other materials are copyright Arlington Family Connection, 2008. Permission is granted to reproduce articles for which copyright is held by AFC provided appropriate credit is given and no fee is charged. The AFC newsletter accepts submissions from AFC members on issues relevant to families with children six and under. The editorial board reserves the right to refuse submissions for any reason. Send editorial submissions to: [newsletter@arlingtonfamilyconnection.org](mailto:newsletter@arlingtonfamilyconnection.org); calendar listings to [calendar@arlingtonfamilyconnection.org](mailto:calendar@arlingtonfamilyconnection.org)

## Puzzle Swap Raises over \$100 for Fox Library

Arlington Family Connection and the Little Fox resale shop hosted a puzzle swap on November 19, which raised over \$100 for the Fox library. Thanks to all the AFC and shop volunteers who helped organize and run the swap. Leftover puzzles from the swap were donated to the shop, so if you missed it please stop by the Little Fox and check out their great selection of puzzles and other items.

The Little Fox is located at the back of the Fox library and is open Tuesdays and Thursdays 9-12 and Wednesdays 2:30-8. For more information, visit [www.littlefoxshop.com](http://www.littlefoxshop.com).

# AFC in Action

## November Highlights



### AFC Skating Party



## December AFC Events

### AFC Playtime

**Mondays, Dec. 1, 8, 15, 22, 29**

**10-11:30am.** The Dance Place, 174 Broadway, Arl. Ctr. Drop-in playtime for kids 0-4 years old with their parent/caregiver. Come and socialize with other families, and watch your little ones play in a contained space with age-appropriate toys. Playtime ends each week with circle time including songs and stories. \$3/family. Glendalys, 617-308-3349, [playgroup@arlingtonfamilyconnection.org](mailto:playgroup@arlingtonfamilyconnection.org)

### Drop-in Playgroup

**Tuesday, Dec. 2**

**3:30-5pm.** Fox Library Comm. Rm., Arl. First Tues. of month. Drop-in anytime. Perfect for non-mobile babies! A great place for caregivers to get to know each other. Ages 0-4. Free. Sandra 781-859-5050, [playgroup@arlingtonfamilyconnection.org](mailto:playgroup@arlingtonfamilyconnection.org)

### Monthly Planning Meeting

**Wednesday, Dec. 3**

**7pm.** Robbins Library, 4<sup>th</sup> Fl. Mtg. Rm. All members, feedback and ideas welcome! Amy, 781-646-5417, [info@arlingtonfamilyconnection.org](mailto:info@arlingtonfamilyconnection.org)

### Outing: Fire Station Tour

**Wednesday, Dec. 10**

**10:30am.** Fire Station on Mass. Ave. in Arl. Ctr. Come join us for a private tour of the fire station. Free. Space limited. RSVP by Dec. 9. Eileen, 617-620-1772, [outings@arlingtonfamilyconnection.org](mailto:outings@arlingtonfamilyconnection.org)

### Book Group

**Wednesday, Dec. 10**

**7:30pm.** Starbucks (327 Broadway, Arl Ctr.). This month's title is *Run* by Ann Patchett. Come even if you don't have the chance to read the book. Shannon, 781-777-2636, [bookgroup@arlingtonfamilyconnection.org](mailto:bookgroup@arlingtonfamilyconnection.org)

### Holiday Sing-Along

**Monday, Dec. 15**

**3:30-4:30pm.** Isis Maternity, 397 Mass. Ave., Arl. Come enjoy a festive and fun sing-along of holiday and winter music. Please bring an **unwrapped** new or gently used toy or article of clothing for a child under 3 as your "ticket." See Page 1 for details. Space is limited, so please RSVP to Lauren by Dec. 14, 781-777-4052, [community@arlingtonfamilyconnection.org](mailto:community@arlingtonfamilyconnection.org)

### Working Moms Group

**Wednesday, January 7**

**7:30pm.** Panera Bread, Mass. Ave., Arl. Heights. Meets the 3rd Wed. of the month. Over 40% of AFC moms are juggling both careers and families. Get together with other working moms - new and experienced! RSVP to [workingmoms@arlingtonfamilyconnection.org](mailto:workingmoms@arlingtonfamilyconnection.org).

## AFC Donates to Boys & Girls Club

Arlington Family Connection supports and enriches the lives of families with young children in Arlington through activities such as outings, seminars, and playgroups. This year we were also able to support families in a more direct way, by making a contribution of \$500 to the Arlington Boys & Girls Club Thanksgiving Fund.

The Club provides affordable and enriching activities for all children in the community, and works especially hard to meet the needs of children from disadvantaged homes. This year the Club has found that more families than

ever are struggling to make ends meet, so it gave gift cards worth \$50 at Johnnies Foodmaster to help families with their Thanksgiving meal. AFC felt that contributing to the Thanksgiving fund would be one of the most direct ways we could fulfill our organization's mission.

Don Brosnan, director of the Club, extends his thanks to all members of AFC. "We strive to serve all youth and their families well, especially those that need us the most," said Brosnan. "We truly appreciate the kindness, generosity, and support of the Arlington Family Connection."

For more information about the Club, please visit [www.abgclub.org](http://www.abgclub.org).

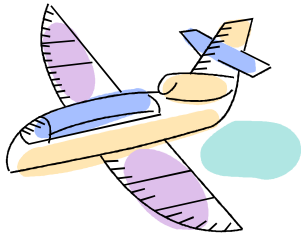
# Tips for Air Travel with Babies

by Lauren Magoun

Toting around a baby and all the accompanying gear through busy airports during the holiday season can be enough to make you want to skip straight into 2009. Here are my tips as a frequent flyer for first time (or non-regular) travelers.

## Ticketing & Booking

- Children under two may be booked free as “lap infants” for domestic flights, but there is a charge on international flights. Some airlines let you book “infant in lap” during online booking, others make you call after booking.
- If you’re traveling with a companion, try to book on a plane that has two-seat rows so you don’t have to worry about your baby kicking the person next to you. Another (riskier) strategy is to book an aisle and a window, hoping no one else will take the middle seat.
- Allow at least 90 minutes for connections, so you have time for diaper changes, feedings, and buying more snacks.
- If you’re buying a seat for your baby, check out rules and information about car seats (below) **before** you book.



## Car Seats

If you buy a ticket for your child, you can install your car seat. Having your child in a car seat is safer and also gives you more room.

- Be sure your car seat is labeled for aircraft use, and review the FAA rules for where a car seat can and can’t be installed on a plane: [www.faa.gov/passengers/fly\\_children/crs](http://www.faa.gov/passengers/fly_children/crs). Be aware that each airline, aircraft, and route may have rules above and beyond the FAA’s, and you may get conflicting information from airline staff about the rules.

- Even if you don’t buy a ticket for your baby, some gate agents will allow you to bring a car seat onto the plane if the flight isn’t too full. It never hurts to ask.

- Check [SeatGuru.com](http://SeatGuru.com) to make sure your car seat will fit, especially on smaller planes. I do find there is some wiggle room. My 18” car seat fits magically in a 17” seat.

## Security

- Check out the TSA rules on traveling with children, including the link to detailed breastmilk/formula rules: [www.tsa.gov/travelers/airtravel/children/index.shtm](http://www.tsa.gov/travelers/airtravel/children/index.shtm)
- **Everything** but the baby will go through the x-ray machine, including car seats, baby carriers, and strollers. Car seats fit best upside down. Your baby’s shoes will need to be removed (sometimes even Robeez!).
- Unless you are traveling internationally, your child does not need ID for security. However, if your child is a lap baby and is on the older side, bring a birth certificate to prove he or she is under two.

## Boarding & Flying

- Ask the gate agent for a gate-check tag for any strollers/car seats you have with you. Many will want to see the item first. Some people check their stroller with their bags (often for a fee) or skip it altogether and use a baby carrier instead.
- If you have two adults flying, try to have one board first with all the bags to get settled, while the other waits until the last minute with the baby.
- Ask a flight attendant which bathrooms (if any) have changing tables.
- Bring 2-3 new, small toys with you. A portable DVD player/laptop can be a good distraction. Some flights have in-flight children’s programming, which is even better.



Good luck! It all sounds much more daunting than it is.

Useful link for further questions:

[www.travelwithyourkids.com](http://www.travelwithyourkids.com)

# Weekly Winter Activities at a Glance

Most activities occur weekly (unless otherwise noted). Refer to the monthly AFC calendar for details. Activities are free unless otherwise noted (\$).

**Robbins and Fox Libraries**—Daily activities, with dates subject to change. Please refer to monthly AFC newsletter, or visit the library website: [www.robbsinlibrary.org](http://www.robbsinlibrary.org)

	<i>Saturday</i>	<i>Sunday</i>	<i>Monday</i>	<i>Tuesday</i>	<i>Wednesday</i>	<i>Thurs</i>	<i>Friday</i>
<b>Sing-Alongs</b>	<b>11am</b> Stellabella Toys, Inman Sq. Cambridge		<b>11am</b> Stellabella Toys, Porter Sq. Cambridge	<b>10am</b> Robbins Library	<b>3pm</b> Finagle a Bagel, Burlington	<b>10am</b> Fox Library (1 <sup>st</sup> Thurs. of month) <b>11am</b> Stellabella Toys, Porter Sq. Cambridge	<b>10am</b> Calvary Church, (1st & 3rd Fri. of Month) (\$)
<b>Story-telling</b>	<b>10:30am</b> Barefoot Books, Cambridge  <b>11am</b> Harvard Coop, Cambridge (2-4yrs)  <b>11am</b> Barnes and Noble, Burlington		Robbins Library <b>10:30am</b> Toddlers <b>11am</b> Preschoolers	Fox Library <b>10am</b> (2-3 yrs.) <b>10:30am</b> (4-5 yrs.)  <b>10am</b> Pottery Barn Kids, Burlington Mall <b>10:30am</b> Barnes & Noble, Burlington <b>11am</b> Harvard Coop, Cambridge <b>2 pm</b> Cary Library, Lexington (4-6 yrs)	<b>10am</b> Starbucks, Arlington Center <b>10am</b> Whole Foods, Woburn <b>10:30am</b> Robbins Library (3-5 yrs.) <b>11am</b> Porter Sq. Books, Cambridge <b>2 pm</b> Cary Library, Lexington (4-6 yrs)	<b>11am</b> Henry Bear's Park, Arlington and Cambridge (3-6yrs)	<b>10:30am</b> Barefoot Books, Cambridge <b>1pm</b> Concord Museum (\$), Concord (2nd Fri. of Month) (3-5yrs) <b>2pm</b> Cary Library, Lexington (3 yrs) <b>6:30 pm</b> Barnes & Noble, Burlington
<b>Playtime</b>	<b>9am-12pm</b> Belmont Belmont KidSpace (\$), Belmont	<b>2-5pm</b> Belmont Kidspace, (2nd & 4th Sun. of month) (3rd Sun of month for special children) (\$)  <b>11:30am-1pm</b> Gymnastics Academy of Boston (\$), Cambridge	<b>10-11:30am</b> AFC Drop-in Playgroup, Dance Place, Arlington (\$)  <b>9:30-11:30am</b> Bedford Family Connection (BFC) Playroom (\$), Bedford  <b>11:30am-1pm</b> Gymnastics Academy of Boston (\$), Cambridge  <b>2:30-5pm</b> Together in Motion (\$)  <b>1-5:30pm</b> Belmont KidSpace (\$), Belmont  <b>3:30-4:30pm</b> , ISIS Maternity, (\$ non members), Arlington (mobile babies up to 3 yrs.)	<b>9:30-11:30am</b> BFC Playroom (\$), Bedford  <b>11:15am-12:45pm</b> Together in Motion (0-24mths) (\$)  <b>11:30am-1pm</b> Gymnastics Academy of Boston (\$), Cambridge  <b>2:30-5pm</b> Together in Motion (\$)  <b>3:30-5pm</b> AFC Drop-in Playgroup, Fox Library (1st Tues. of the Month)	<b>9:30-11am</b> Tots & Twos, Gibbs Gym (\$)  <b>9:30-11:30am</b> BFC Playroom (\$), Bedford  <b>9:30-11am</b> LPPTA WinterFun (\$), Lexington (Alternate Wed.)  <b>11:30am-1pm</b> Gymnastics Academy of Boston (\$), Cambridge  <b>1-5:30pm</b> Belmont KidSpace (\$), Belmont  <b>2:30-5pm</b> Together in Motion (\$)	<b>9:30-11:30am</b> BFC Playroom (\$), Bedford  <b>9:30-11am</b> Drop-in Playtime, Winchester (\$)  <b>9:30am</b> Baby Lap Time, Cary Library, Lexington  <b>11:30am-1pm</b> Gymnastics Academy of Boston (\$), Cambridge  <b>10:30am-12</b> TumbleKids (\$) Winchester  <b>1-5:30pm</b> Belmont KidSpace (\$), Belmont 1:45-2:45pm ISIS Maternity (\$ non members), Arlington (non mobile babies)  <b>2:30-5pm</b> Together in Motion (\$)	<b>9:30-11am</b> Tots & Twos, Gibbs Gym (\$)  <b>9:30-11am</b> Parent & Tots, Arl. Boys & Girls Club, (donation \$)  <b>9:30-11:30am</b> BFC Playroom (\$), Bedford <b>9:30 or 10:30am</b> Fidelity House, Drop-in (\$) <b>9:30-11:30am</b> LPPTA Drop-in Center, Lex. (\$)  <b>11:30am-1pm</b> Gymnastics Academy of Boston (\$), Cambridge <b>12-1:30pm</b> Waldorf Park @ Waldorf School, Lexington (\$)  <b>12:30-2pm</b> TumbleKids (\$) Winchester & Watertown  <b>2:30-5pm</b> Together in Motion (\$)  <b>5-8pm</b> Belmont KidSpace (\$), Belmont
<b>Misc.</b>	<b>10:30am</b> Regent Theater Family Fun Series (\$) <b>4-5:50pm</b> Public Skating, Arl. Memorial Rink (\$)	<b>9:30-11:30am;</b> <b>2- 4 pm</b> Public Skating, Arl. Memorial Rink (\$)	<b>Starts 1-2pm</b> Capitol Theater Movie w/ Babies (\$) <b>12-1:50pm</b> Public Skating, Arl. Memorial Rink (\$)	<b>10:30am</b> Pre-school Movies, Cary Library, Lexington <b>10:30-11:15am</b> - Parent & Child Drop-in Swim, Arl. Boys & Girls Club (\$)		<b>9-11am</b> Public Skating, Arl. Memorial Rink (\$)	<b>5:30pm or 6:15pm</b> Family Drop-in Swim, Arl. Boys & Girls Club (\$) <b>11am-1pm;</b> <b>2:30-4:30pm;</b> <b>7-9 pm</b> Public Skating, Arl. Memorial Rink (\$)

## Addresses of Weekly Activities

	<i>Name</i>	<i>Address</i>
<b>Sing-Alongs &amp; Storytelling</b>	Barefoot Books	2067 Massachusetts Ave # 24, Cambridge - (617) 576-0660
	Barnes and Noble	98 Middlesex Pkwy, Burlington - (781) 273-3871
	Cavalry Church	300 Mass. Ave, Arlington
	Cary Library	1874 Massachusetts Ave, Lexington - (781) 862-6288
	Concord Museum	200 Lexington Rd, Concord - (978) 369-9763
	Fox Library	175 Massachusetts Ave, Arlington - (781) 316-3198
	Harvard Coop	1400 Mass. Avenue, Cambridge - (617) 499-2000
	Henry Bear's Park	685 Mass Ave, Arlington - (781) 646-9400
	Porter Square Books	Porter Square shopping center, 25 White Street, Cambridge - (617) 491-2220
	Pottery Barn Kids	Burlington Mall - (781) 221-5833
	Robbins Library	700 Mass Ave, Arlington - (781) 316-3200
	Starbucks	327 Broadway, Arlington - (781) 641-2893
	Stellabella Toys, Inman	1360 Cambridge St, Cambridge - (617) 491-6290
	Stellabella Toys, Porter	1697 Mass Ave, Cambridge - (617) 864-6290
	Whole Foods	400 Cambridge Rd, Woburn - (781) 376-9600
<b>Playtime</b>	AFC drop in playgroup	Dance Place, 174 Broadway, Arlington
	Arlington Boys & Girls	60 Pond Ln, Arlington (781) 648-6586
	Bedford Family	First Parish Church, 75 Great Rd, Bedford
	Belmont Kidspace	Payson Park Church, 365 Belmont St, Belmont
	Fidelity House	25 Medford St. Arlington - (781) 648-2005
	Gibbs Gym	50 Tuft St, Arlington
	Gym. Academy of	128 Smith Place, Cambridge - (617) 441-9700
	LPPTA Drop in	Kennedy Hall, St. Brigid Church, 2001 Mass Ave, Lexington - (781) 862-6965 (contact is
	LPPTA Winter Fun	328 Lowell St, Lexington - (781) 674-2225 (contact is Lisa)
	Together in Motion	1 Broadway, Arlington - (781) 643-1377
	Tumblekids USA	38 River St, Winchester - (781) 721-1144
Waldorf Park	Waldorf School, 739 Mass Ave, Lexington - (781) 863-1062	
<b>Miscellaneous</b>	Skating Rink	422 Summer St., Arlington - (781) 316-3880

# Local Events & Activities – December

For even more resources refer to [www.arlingtonfamilyconnection.org](http://www.arlingtonfamilyconnection.org)

## Special Events for Families

### Holiday Fairs & Shopping Events

#### **Arlington First Lights**

Sat. Dec. 6, 12-6pm, Enjoy activities and special promotions occurring along Mass. Ave. Festivities include visits by Rudolph, Elf and Frosty the snowman to various stores while Santa will be at the RCN store for photos. **Meet from 5-6pm in front of Town Hall for the final festivities.** Entire schedule at [www.ShopArlingtonFirst.com](http://www.ShopArlingtonFirst.com) or call 781-643-4600.

#### **Christmas Tree Sale**

Begins Dec. 6, 9-8pm daily, Clubhouse at 60 Pond Lane. A large selection of beautiful trees will be on display as well as an assortment of plain & decorated wreaths are available. Info: 781-648-1617 or [www.abgclub.org](http://www.abgclub.org)

#### **Christkindlmarkt**

Sat. Dec. 6, 12-3pm, German International School Boston, 57 Holton St. Allston. Enjoy German fare, baked goods, hot mulled wine, holiday gifts & crafts, children's activities, raffle, choir & theater performances, pictures with Santa, Info: 617-783-2600 or [www.gisbos.org](http://www.gisbos.org)

#### **Holiday Fair at the Waldorf School**

Sat. Dec. 6, 10am-4pm, 739 Mass. Ave. Lex. Mummers play, marionette show, singers, & musicians, blacksmithing & pot throwing, children's crafts & games, face painting, candle dipping, lunch and dessert café. Forty artisans will display their wares. Angel Room shopping for little ones. \$5/adult, \$3/child, \$15/family. Info: 781-863-1062 or [www.thewaldorfschool.org](http://www.thewaldorfschool.org)

#### **Holiday Open House in Concord**

Sun. Dec. 7, 5:30-6:30pm, Concord Center, Come see a parade with Frosty, Santa & Mrs. Claus, and Louisa May Alcott. Enjoy music in Monument Sq. prior to the **tree lighting at 6:30pm**. See strolling carolers and get special treats in many of the shops along Main and Walden Streets, Free hot cocoa & more! Info: [www.concordchamberofcommerce.org](http://www.concordchamberofcommerce.org)

#### **Santa at the Burlington Mall**

Until Dec. 24, 75 Middlesex Turnpike (off 128/I-95 exit 32B) For Santa's hours and other info: 781-272-8667 or [www.shopatburlington.com](http://www.shopatburlington.com)

#### **Santa at the Concord Museum**

Sat. Dec. 6, 10am-12pm. Meet Santa and enjoy some seasonal activities. \$25/child, free for members and their children. Reservations suggested. Info: 978-369-9763 or [www.concordmuseum.org](http://www.concordmuseum.org)

#### **Verrill Farm**

Sat. Dec. 13, 3-5pm, 11 Wheeler Rd. Concord. Visit with Santa and hear live music by Two For The Show. Info: 978-369-4494 or [www.verrillfarm.com](http://www.verrillfarm.com)

### Holiday Exhibits & Exhibits

#### **A Polar Bear's Journey**

Dec. 6, 7, 13, & 14, Ecotarium, 222 Harrington Way, Worcester. Listen as Santa reads *The Polar Express*. He then sends you to ride the Explorer Express Train to the Ecotarium's North Pole to meet Kenda the polar bear. Have cocoa and cookies while you ride! **Trains at 12:30pm, 1:30pm, & 2:30pm.** \$6 + museum admission or \$5/member, Info: 508-929-2700 or [www.ecotarium.org](http://www.ecotarium.org)

#### **Boston Tree Lighting Ceremony**

Thurs. Dec. 4, 6-8pm, Boston Common. Attend Boston's official tree lighting ceremony during a holiday sing-along. Trees throughout the common and public garden will be lit. A stage show will include carolers, local and international entertainment, Santa, and more! Info: 617-635-4505 or [www.cityofboston.gov/parks](http://www.cityofboston.gov/parks)

#### **Children's Tea at Gore Place**

Sat. Dec. 6 and 13 at 10:30am, 52 Gore Street, Waltham. Enjoy as the Great Hall of the mansion will be transformed into a 19th century tea room offering a special children's menu, entertainments and a visit from Santa. \$25/person. Reservations required. Info: 781-894-2798 or [www.goreplace.org](http://www.goreplace.org).

#### **Edaville USA**

Through Jan. 1, Mon.-Fri. 4-9pm, Sat./Sun. 2-9pm in Carver, MA. Take a train ride and see over 7 million holiday lights; ride the carousel, see holiday displays. \$18, 0-2 yrs. Free. Info: 1-877-EDAVILLE or [www.edaville.com](http://www.edaville.com)

#### **Family Trees at the Concord Museum**

Dec. 4-Jan. 4, 200 Lexington Rd. Concord. Come see the galleries filled with fanciful trees decorated with original ornaments inspired by acclaimed children's books and contemporary picture book favorites. **Mon.-Sat. 11-4pm, Sun. 1-4pm.** Nonmembers: \$15/adult, \$10/seniors & students, \$6/children 4yrs-18yrs

Members free. Suggested donation. (All proceeds fund educational programs.) Info: 978-369-9763 or [www.concordmuseum.org](http://www.concordmuseum.org)

#### **Holiday Tot Holiday Party**

Fri. Dec. 14, 10:30am, Arl. Boys & Girls Club, 60 Pond Lane. Includes a sing-along and age-appropriate crafts. Santa will be available for pictures, but you must bring your own camera. Info: 781-648-1617 or [www.abgclub.org](http://www.abgclub.org)

#### **Polar Express/Journey to the North Pole**

Sat. Dec. 6. Departs from the Newburyport Commuter Rail Station. Includes a wonderful train ride, a sea of elves, and Santa. Trains depart at **11:25am, 1:15pm, 3:15pm, 5:30pm, & 7:30pm.** \$25 each, under 1yr/free. [www.icspolarexpress.com](http://www.icspolarexpress.com)

#### **Zoolights**

Thanksgiving-Dec. 30, 5-9pm, Stone Zoo, 149 Pond St. Stoneham. Visit Santa (through Dec.23) and a magical holiday world filled with fairy tale characters and dancing plush animals. Walk tree lined paths lit by thousands of twinkling lights. \$5/person, under 2yrs/free, Santa photos and carousel rides cost extra, 781-438-5100 or [www.zoonewengland.com](http://www.zoonewengland.com).

#### **First Night, Boston**

Wed. Dec. 31, 12pm-midnight. See music, dance, theater, visual arts, film and more at over 40 indoor and outdoor venues throughout downtown Boston. Attractions include: a family festival featuring interactive activities for all ages, giant ice sculptures, fireworks, and a Mardi-Gras style parade through the streets. Buttons are \$15/person, under 4yrs/free Info: 617-542-1399 or [www.firstnight.org](http://www.firstnight.org)

### Ballet, Musicals, Theater

#### **Curious George goes to Music School**

Sun. Dec. 14 at 12pm & 2pm, Longy School of Music, 27 Garden St. Cambridge. Come along with the "very curious" George as he visits a music school, meets different instruments, and learns about the powerful sounds, images, and emotions created by music. In this interactive program, children become conductors, singers, active listeners and even "drumming" partners with George. \$12/adult, \$7/child 3-17yrs, free/under 3yrs. Tickets: [www.MKTix.com](http://www.MKTix.com) Info: 617-876-0956 or [www.longy.edu](http://www.longy.edu)

**Family Fun Saturdays (and one Friday)**  
Dec. 5 & 6: The Legacy Dancers 20<sup>th</sup> Annual Holiday Dance Show  
Dec. 13: Justin Roberts  
Dec. 20: Ben Rudnick & Friends  
For information on the individual shows, show times, ticket prices and purchase visit: [www.regenttheatre.com](http://www.regenttheatre.com) or call 781-646-4849

**James and The Giant Peach**  
Dec. 5-7 at 7pm shows Fri. & Sat., 2pm show Sun. Arlington Center for the Arts, 41 Foster St. Enjoy the classic tale by Roald Dahl as performed by 25 8-12 yr old actors. \$10 in advance or \$12 at the door, Info: [www.act.arlington.ma.us](http://www.act.arlington.ma.us)

**Nutcracker performances**  
**José Mateo's Ballet Theatre** performs Dec. 5-7, 12-14 at Brandeis Theater. Info and tickets: [www.brandeis.edu/btc](http://www.brandeis.edu/btc)  
**New York Theatre Ballet-New York City** performs Dec. 7 at 2pm & 4pm at UMass Lowell. Info and tickets: [www.uml.edu/centerforarts](http://www.uml.edu/centerforarts)  
**Dance Place** performs Dec. 13 at 6pm and Dec. 14 at 2pm at Chevalier Theater, Medford. Info and tickets: [www.chevaliertheatre.com](http://www.chevaliertheatre.com)

**Once Upon a Time with Kidstock**  
140 Clarendon St. Boston,  
Dec. 6, 7 at 11am, **Santa's Elves & The Shoemaker**  
All ages, \$10/person, children under 3yrs free. Info: 617-585-5678 or [www.lyricstage.com](http://www.lyricstage.com).

**Other Events**  
**Model Trains**  
Sat. Dec. 13, 10-5pm, & Sun. Dec. 14, 12-5pm National Heritage Museum, 33 Marrett Rd. Lex. See lots of moving trains on display. Members: \$7/family, \$5/family members. Info: 781-861-6559 or [www.monh.org](http://www.monh.org)

**Meet classic book characters at the Concord Museum**  
Dec. 6, 7: Peter Rabbit  
Dec. 13, 14: Pat the Bunny  
Dec. 20, 21, 27, 28: The Very Hungry Caterpillar  
At 1:30pm and 2:30pm each day. Info: 978-369-9763 or [www.concordmuseum.org](http://www.concordmuseum.org)

**New England Model Train Expo**  
Sat. Dec. 6, 10-5pm & Sun. Dec. 2, 10-4pm, Best Western Royal Plaza Trade Center, Marlborough. Enjoy various sized operating layouts, meet Santa (kids under 12 get a free gift) dealer tables, opportunity to sell your old trains, Boy Scout Merit Badge Clinic, manufacturer displays, books, collectibles, door prizes, food, and free parking. 2 Day Admission- \$7/adult, \$6/seniors, Free/children under 12yrs. **Wear your Boy/Girl Scout uniform to get in Free and**

**Sun. kids under 12yrs/free** Info: 339-788-0967 or [www.hubdiv.org](http://www.hubdiv.org)

**BosTix Junior**  
Bring your child to the theater to see family friendly plays and musical productions. Info: [www.BosTix.org](http://www.BosTix.org)

**Baby Loves Disco**  
One Sunday each month, 2-5pm, Revolution Rock Bar, 200 High St. Boston, \$15 (non-walkers, free) Childproof disco/dance party with "real" music by the legendary DJ kon, healthy snacks by Wild Oats, bar available for mom and dad. Info: [www.babylovesdisco.com](http://www.babylovesdisco.com)

**Sing-Alongs & Music**  
**Monday**  
11am, **Stellabella Toys**, 1967 Mass. Ave., Camb., Porter Sq. Free. Info: 617-864-6290.

**Wednesday**  
3pm, **Finagle a Bagel**, 91 Middlesex Tpke, Burl. Ed Morgan performs fun original and classic children's songs. Free 781-273-6500, [www.finagleabagel.com](http://www.finagleabagel.com)

**Thursday**  
**Cary Library** 1874 Mass Ave, Lex. Dec. 4, 11  
9:30am 0-15months  
10:30am 16-24 months  
11am 25-30 months.  
11am, **Stellabella Toys** (except holidays) 1967 Mass. Ave., Camb., Porter Sq. Free Sing along. Info: 617-864-6290.

**1st and 3rd Friday of the month**  
10am, **Calvary Church**, 300 Mass. Ave. Join Diane Taraz for a fun sing-a-long, \$2/person, \$5/family, Info: [www.dianetaraz.com](http://www.dianetaraz.com)

**Saturday**  
11am, **Stellabella Toys**, 1360 Cambridge St. Inman Sq. Camb. Sing songs, play games Free. Info: 617-491-6290.

### **Storytimes and Library Programs**

**ROBBINS LIBRARY**  
**Alex the Jester**  
Dec. 6, 2pm. He can play three flutes at the same time, squirt ridiculous quantities of water from his mouth and speak in the gibberish language of Grammelot. For all ages. Space is limited. Tickets required. Available one hour before performance.

**Moving and Grooving**  
Dec. 5, 19 at 10am. Sign up children under age 2 to enjoy music and movement with Marina Strauss.  
**English Story Rime**

**Mon.** Dec 1, 8 (drop in)  
**10:30 am** for ages 18-30 months. Stories, rhymes and fingerplays for the first 15 minutes followed by a simple craft  
**11am** for ages 2½ and up  
Longer stories followed by a craft.  
**Wed.** Dec 3, 10 at **10:30am**, for 3-5 year olds. Longer stories followed by a craft. Drop in.  
**Spanish Story Rime**  
Sat. Dec. 13 at 9:30am. Stories, songs, books and poems. All ages. Drop in  
**Sing-Alongs for Infants and Toddlers**  
Tues. Dec 2, 9, 16 at 10am. Space is limited; tickets are given out the day of the event beginning at 9am.

**Vacation Week Crafts**  
Dec. 29, 30, Jan. 2 from 2-4pm. Come and make a winter bird decoration, a snowman picture and a penguin puppet. Ages 4-8. Drop in.

**FOX LIBRARY**  
**Polar Express Movie**  
Dec. 17, 6:30pm

**Sing-alongs**  
Thurs, Dec. 4 at 10am, (the first Thursday of every month). For infants and toddlers. Join Sulinha for singing dancing and fun.  
**English story time**  
Tues. Dec. 2, 9  
10:00am for ages 2-3  
10:30am for ages 4-5  
Stories and finger plays followed by a craft. Drop in.

*Monday*  
**Starbucks**  
10:15am, Arlington Center. Free. Info: 781-641-2893.

*Tuesday*  
**Barnes & Noble** for preschoolers  
10:30am, 98 Middlesex Tpke., Burlington. Free. Info: 781-273-3871.  
**Cary Library Lexington**  
2pm, 1874 Mass Ave, Lex. For ages 4-6 yrs. Info: 781-862-6288 (Dec. 2, 9)  
**Harvard Coop** for ages 2-4  
11am, 1400Mass. Ave. Camb. Free, Info: 617-499-2000.  
**Pottery Barn Kids**  
10am, Burlington Mall. Free. Info: 781-221-5833

*Wednesday*  
**Cary Library**,  
10:30am for age 2.5yrs.  
2pm for ages 4-6 yrs.  
(Dec. 3, 10) Info: 781-862-6288  
**Porter Square Books**  
11am, Porter Sq. Shopping Ctr. Camb. Free  
Info: 617-491-2220,  
[www.portersquarebooks.com](http://www.portersquarebooks.com)

### **Thursday**

**Henry Bear's Park** for ages 3-6  
11am, 685 Mass. Ave. Arl. Free. Info: 781-646-9400 or [www.henrybear.com](http://www.henrybear.com)  
11am (call to confirm) 361 Huron Ave, Camb. Free. Info: 617-547-8424 or [www.henrybear.com](http://www.henrybear.com).

### **Friday**

**Barefoot Books** for ages 1yr +  
10:30am, 1771 Mass. Ave. Camb. A fun hour of age-appropriate stories, coloring and refreshments, Free. Info: 617-349-1610 or [www.barefootbooks.com](http://www.barefootbooks.com).

**Cary Library Lexington**  
2pm. For age 3 yrs. Info: 781-862-6288 (Dec. 5, 12)

**Concord Museum Story Hour**  
Fri. Dec. 12, 1pm. Concord Museum, 200 Lexington Rd., Concord. For ages 3-5 years; adult/child program, \$5/pair, members, \$8/pair, nonmembers. Activity and snack registration required Info: 978-369-9763 or [www.concordmuseum.org](http://www.concordmuseum.org)

**Barnes & Noble** for preschoolers  
6:30pm, 98 Middlesex Tpke. Burlington,

### **Saturday**

**Barefoot Books** for ages 1yr +  
10:30am. 1771 Mass. Ave. Camb. A fun hour of age-appropriate stories, coloring, and refreshments. Free. Info: 617-349-1610, [www.barefootbooks.com](http://www.barefootbooks.com)

**Barnes & Noble** for preschoolers  
11am, 98 Middlesex Tpke., Burlington. Free. Info: 781-273-3871.

**Harvard Coop** for ages 2-4  
11am, 1400 Mass. Ave. Camb. Preschool story hour with snack and craft, Free, 617-499-2000 or <http://store.thecoop.com>

### **Other Arlington Fun Stuff**

#### **Arlington Boys and Girls Club**

Register for winter classes.

**Parent-Tot connection**, Fri. 9:30-11am. Drop in playgroup for toddlers and preschoolers with caregiver. Play, crafts, stories, music. Free. Info: [www.abgclub.org](http://www.abgclub.org)

#### **Arlington Center for the Arts**

Offers many fun classes for children  
Info: 781-648-6220 or [www.acarts.org](http://www.acarts.org).

#### **Arlington Children's Theater**

Register for fall workshops including Musical Theater, Creative Movement and Story Theater, all for ages 3-5. Other classes for ages 6 and up offered as well. Info and registration at 781-316-8090.

#### **Arlington Recreation Dept.**

Offers many fun, spring classes for children.  
Info: 781-316-3880 or [www.arlingtonma.gov](http://www.arlingtonma.gov).

#### **Arthbeat**

**Tot Art Tuesdays**, 10:30-11:30am, offering a special art project for ages 18mos to 4yrs,

adult supervision required, \$6/child.  
**Special free workshop**, Dec 6, 12-2pm, make glittery ornaments. Ages 4yrs+  
**Weekend Workshops**, Sat., 3-6pm, 212A Mass. Ave, Arl. A different project each week, free instruction, pay for materials, Ages 4yrs+  
Info: 781-646-2200, [www.artbeatonline.com](http://www.artbeatonline.com).

#### **Capitol Theater Movies for Caregivers with Babies**

Mon. 204 Mass. Ave. Arl. Begin between 1-2pm. New movies chosen weekly. \$5/adult Nursing, bottle feeding, fussing, changing diapers are never frowned upon. Info: 781-648-6022, [www.somervilletheatreonline.com](http://www.somervilletheatreonline.com).

#### **Fidelity House**

25 Medford St. Arl. Offers classes for preschoolers that also have a drop-in option  
**Tot Time**, Fridays, 9:30am or 10:30am, Open gym with different activities to develop fine/gross motor and social skills, parent remains w/child, \$5 drop-in fee (space permitting). Info: 781-648-2005 or [www.FidelityHouse.org](http://www.FidelityHouse.org).

#### **Isis Maternity**

Programs & products for expecting & new parents. *AFC member discount-1<sup>st</sup> month free*,  
**Drop-in Playgroups:**  
Non-mobile babies Thurs. 1:45-2:45pm,  
Mobile babies Mon. 3:30-4:30 pm, (to 3 yrs)  
Free for members, \$5 for non-members. Info: [www.isismaternity.com](http://www.isismaternity.com).

#### **Music Together**

Explore what music sounds like, looks like, and feels like. Now enrolling for 2009 sessions. Call 781-648-4084 or visit [www.musictogetherofarlington.com](http://www.musictogetherofarlington.com)

#### **Toddlers and Twos**

Every Weds. And Fri. 9:30-11am, Gibbs Gym, Foster St. Indoor play program for tots (15-36 months) and parents, emphasizing development of gross and fine motor skills. Kitchen area, bouncy house, riding and climbing toys. New this year: a music program with sing along and instruments in the lower classroom on Weds. and scheduled art project on Fri. \$45/10 visit pass or \$5/drop-in/child. Info: 781-316-3880 or [www.arlingtonma.gov](http://www.arlingtonma.gov)

#### **Together in Motion**

Drop-in play space entirely padded with soft play blocks, modules, balls etc. Mon-Fri 2:30-5pm for ages 0-6. Tues 11:15am-12:45pm for ages 0-24 months only. \$7/ages 1-6; \$5, 6-12 mos; under 6 mos, free with paying sibling. Group rates offered for 8 or more children. Various classes offered as well, see website for more info. Info: 781-643-1377 or [www.togetherinmotion.com](http://www.togetherinmotion.com)

#### **Veteran's Memorial Skating Rink**

422 Summer St. \$3/children under 16, \$6/adult  
Public Skating: **Mon.** 12-1:50pm, **Thurs.** 9-11am, **Fri.** 11-1pm, 2:30-4:30pm, & 7-9pm, **Sat.** 4-5:50pm, **Sun.** 9:30-11:30am, & 2-4pm,  
Info: 781-316-3880 or [www.arlingtonma.gov](http://www.arlingtonma.gov)

### **Indoor Playspaces**

**Bedford Family Connection Playroom**  
Mon.-Fri. 9:30-11:30am, First Parish Church, 75 The Great Rd. Bedford (use Elm St. entrance). Members 50 cents/child, non-members \$2/child. Info: Niki Curry at [currymn@comcast.net](mailto:currymn@comcast.net) or [www.kidsplaybedford.com](http://www.kidsplaybedford.com).

#### **Belmont Kidspace**

Payson Park Church (lower level) 365 Belmont St. Belmont, This indoor playspace is a parent run co-op where families with infants, toddlers, and preschoolers can have lots of fun. **Mon. & Thurs.** 1-5:30pm, **Fri.** 5-8pm, **Sat.** 9am-12, **2<sup>nd</sup> & 4<sup>th</sup> Sun.** 2-5, **3<sup>rd</sup> Sun. of the month** 2-5pm for special children. See website for admission info. [www.belmontkidspace.org](http://www.belmontkidspace.org)

#### **Gymnastics Academy of Boston**

Open gym Mon-Fri & Sun 11:30am-1pm. Drop-in and explore. \$5/members, \$10/non-members 128 Smith Place, Camb. Info: 617-441-9700 or [www.gymnasticacademyofboston.com](http://www.gymnasticacademyofboston.com).

#### **Kids Playground**

15 Normac Rd., Woburn Indoor playground with playspace, tubes and tunnels, mini golf. Info: 781-935-2300, [www.kidsplayground.com](http://www.kidsplayground.com).

#### **Lexington PTA Drop in**

Fri, 9:30-11:30am, Kennedy Hall in St. Brigid's School at St. Brigid's Church, 2001 Mass Ave, Lex. (use Worthen Rd. entrance). This indoor playspace is for 0-5yr olds and their parents/caregivers to play, relax, and socialize. \$1/child, Info: 781-862-6965 or [www.lppta.org](http://www.lppta.org).

#### **Lexington PTA Winter Fun**

Every other Wed, 9:30-11am. 146 Maple St, Lex. Drop-in arts and crafts program for toddlers and preschoolers. \$2/child. Info: 781-674-225 or [www.lppta.org/winterfun](http://www.lppta.org/winterfun)

#### **My Gym**

362 Cambridge Rd, Woburn (in Whole Foods/Toys R Us shopping center). Indoor playspace for babies and toddlers. Open gym: Tues. 11:45am-12:45pm, Wed. 3:30-4:30pm. Info: 781-376-9102 or [www.my-gym.com](http://www.my-gym.com).

#### **Perpetual Motion**

345 Chelmsford St., Lowell (off Rt. 3) Indoor playground for kids 0-6yrs. **New separate play area for 5yrs+.** Info: 978-452-0777 [www.perpetualmotioninc.com](http://www.perpetualmotioninc.com).

### **TumbleKids Open Gym**

Thurs. 10:30am-12pm, Fri. 12:30-2pm in Winchester, only Fridays in Watertown. \$10/child. Classes offered for an additional fee. 38 River St., Winchester 781-721-1144 and 201 Arl. St., Watertown, 617-926-2640 or visit [www.tumblekidsusa.com](http://www.tumblekidsusa.com).

### **Waldorf Park**

Fri. 12-1:30pm at Waldorf School, 739 Mass. Ave. Lex. Unstructured playtime. Ages 0-3yrs. Drop-in, donation \$5-10/family. Info: 781-863-1062 or [www.thewaldorfschool.org](http://www.thewaldorfschool.org).

### **Winchester Recreation Playtime**

Thurs. 9:30-11 am (through Dec 11), 263 Main St. Win. Unstructured playtime, play options may consist of arts/crafts, sports and games, music, reading and more. Ages 9mths - 4yrs. Drop-in, \$5/family. Info: 781-721-7125 or [www.winrec.com](http://www.winrec.com).

### **Beyond Arlington**

#### **Puppet Showplace Theatre**

Shows on Sun. 1pm, Wed. & Thurs. at 10:30am and 1pm. 32 Station St., Brookline. Ages 3 and up. Age appropriateness varies per show. \$7.50/members, \$9.50/non-members. Reservations recommended. Info: 617-731-6400, [www.puppetshowplace.org](http://www.puppetshowplace.org).

#### **Home Depot Kid's Workshop**

1st Sat. of the month, 10am-noon, 10 1st Ave., Waltham. Drop-in build-it-yourself project, Ages 2+ with an adult. Call 781-672-0900

#### **Pre-school Movies**

Tues. 10:30am. Cary Mem. Library 1874 Mass. Ave., Lex. Drop-in movies for ages 2-6. Free. Info: 781-862-6288 or [www.caryllibrary.org](http://www.caryllibrary.org)

### **Local Attractions**

#### **Boston Children's Museum**

300 Congress St., Boston. Open daily, 10am-5pm, Fri until 9pm. Hands-on approach to history, science, etc.; toddler PlaySpace. New, expanded space and exhibits, including 3-story climbing structure. Info: [www.bostonkids.org](http://www.bostonkids.org).

#### **Children's Discovery Museum**

177 Main St., Acton. Open daily, 9am-4:30pm. Victorian house with transformed into 10 hands-on exhibit areas. Ages 6 & under. Check website for special programs. \$9, free under 1. Info: 978-264-4200 or [www.discoverymuseums.org](http://www.discoverymuseums.org).

#### **Concord Museum**

200 Lexington Rd. Concord. Open daily, Mon-Sat 9am-5pm, Sun 12-5pm. Historical, literary, artistic treasures of the area. \$10/adults, children under 6 free. Info: 978-369-9763 or [www.concordmuseum.org](http://www.concordmuseum.org). general overview of their kindergarten

#### **Ecotarium**

222 Harrington Way, Worcester. Open Tues-Sat 10am-5pm, Sun 12-5pm. Monthly family preschool programs. Members free, \$.10/Non-member adult, \$8/Non-member ages 3-18. Explorer Express Train ride, \$2.50/person. Info: 508-929-2700 or [www.ecotarium.org](http://www.ecotarium.org).

#### **Frog Pond, Boston Common**

The Frog pond offers concessions, skate rentals, rest rooms, and a warming area. Info: 617-635-2120 or [www.bostoncommonfrogpond.org](http://www.bostoncommonfrogpond.org).

#### **Habitat Wildlife Sanctuary**

10 Juniper Rd, Belmont. Trails wind through forests, across meadows, around 2 ponds, wetlands. Programs for kids. Members free, \$4/non-memb. adult, \$3/non-memb. child. Info: 617-489-5050 or [www.massaudubon.org](http://www.massaudubon.org).

#### **Harvard Museum of Natural History**

26 Oxford St. Cambridge. Open daily 9am-5pm. Wide array of stuffed animals in the mammal exhibit. 40-ft dinosaur replica. \$9/adult, \$6/ages 3-18. Free for MA residents every Sun. 9am-noon, Wed. 3-5pm. Info: 617-495-3045 or [www.hmn.harvard.edu](http://www.hmn.harvard.edu).

#### **Institute of Contemporary Art**

100 Northern Ave., Boston. Open Tues-Sun 10am-5pm, Thurs & Fri until 9pm. Free Family Fun Playdates, last Saturday of every month, 10 am-4 pm. to adults accompanied by child 12 and under. \$12 general admission. Info: 617-478-3234 or [www.icaboston.org](http://www.icaboston.org).

#### **Museum of Fine Arts**

465 Huntington Ave., Boston. Family Place, for families with children 4 and up, interactive art activities, Sat-Sun, 11am-4pm. Info: 617-267-9300 or [www.mfa.org](http://www.mfa.org).

#### **Museum of Science**

Science Park, Boston. Open daily 9am-7pm, Fri until 9pm. Hands-on Discovery Zone, with children's gallery for those 5 and under. Info: 617-723-2500 or [www.mos.org](http://www.mos.org).

#### **National Heritage Museum**

33 Marrett Rd., Rt. 2A, Lexington. Open daily 10am-5pm, Sun 12-5pm. Great monthly programs including storytimes with crafts. Free admission. Info: 781-861-6559 or [www.monh.org](http://www.monh.org).

#### **New England Aquarium**

Central Wharf, Boston. Open daily 9am-5pm, Sat & Sun until 6pm. \$19.95/adult, \$11.95/children ages 3-11, free for children under 3. Info: 617-973-5200 or [www.neaq.org](http://www.neaq.org).

programs. They will present information and

#### **Southwicks Zoo**

2 Southwick St, (off Rt. 16), Mendon. Open daily, 10am-5pm. Animals & birds, shows, kiddie rides, animal rides (ponies, camels, elephants). \$18.75/adults; \$12.75/ages 3-12; under age 2, free. WGBH & AAA discounts. Info: 800-258-9182 or [www.southwickszoo.com](http://www.southwickszoo.com).

#### **Stone Zoo**

149 Pond St. Stoneham. Open weekdays 10am-5pm & weekends 10am-4pm. Small zoo, with a petting barnyard, playground and many animal exhibits. \$9/Adult, \$6/Ages 2-12, under 2yrs. free. Info: 781-438-5100 or [www.zoonewengland.com](http://www.zoonewengland.com).

#### **Take a Walk at Gore Place**

52 Gore St., Waltham, Mon-Fri, 10am-4pm; Sat 11-3pm. Visit llama, sheep, goats, chickens, rabbits. Rent an "activity pack" with activities appropriate for children ages 3-9yrs. Backpack rental, \$5. Special Concert Sept. 14. Info: 781-894-2798 or [www.goreplace.org](http://www.goreplace.org).

#### **Verrill Farm**

11 Wheeler Rd. Concord, 9am-7pm daily, Info: 978-369-4494 or [www.verrillfarm.com](http://www.verrillfarm.com).

### **Seminars and Open Houses**

#### **Child Studies**

Have you ever wondered what your infant is thinking when they meet a new person or play with a new toy? The Tufts University Emotion, Brain, and Behavior Lab is seeking subjects for studies whose goal is to gain new knowledge that will ultimately contribute to the healthy development of children of all ages. The lab is currently conducting research studies with infants between the ages of 3 to 7 months old. There are also ones for older children. If you are interested in participating call 617-627-3478 or email [babylab@tufts.edu](mailto:babylab@tufts.edu).

#### **Highrock Covenant Preschool Open House**

Dec. 6, 10am-1pm, 127 Lowell Street, Arl. HCP has January openings and is enrolling students that are 2.9yrs through 5yrs. Parents can select from a range of affordable and flexible schedules. Info: 781-646-4427 or [www.preschoolrocks.org](http://www.preschoolrocks.org)

#### **Lesley Ellis School Open House**

Jan. 6, 9:30-11am, 41 Foster St., Arlington. Meet the faculty, staff and current parents. Visit classrooms, and attend an information session with the Head of the School. Children welcome. For more info. Including directions call 781-641-1346 or [www.lesleyellis.org](http://www.lesleyellis.org).

#### **Getting Ready for Kindergarten**

Jan. 15, 6:45-8:30pm, Hardy School. The Arlington Public schools welcome you for a strategies to assist you in supporting your

child's transition to public school education. The evening will provide you the opportunity to meet the principals and some teaching staff, to learn the details regarding the registration process, and to take a glimpse at the kindergarten curriculum. This will be the first step in a series of informational meetings that will prepare you and your child for kindergarten. Info:  
[www.arlington.k12.ma.us/kindergarten](http://www.arlington.k12.ma.us/kindergarten)

### **Benefits**

#### **Donate Women's Clothing for a Good Cause**

The women who brought you the PTO Thrift Shop are organizing a women's clothing sale in February to benefit the Friends of the Fox Library. Donations will be accepted on **Wed Dec. 10, 4-9pm** and on several dates in January and February, in the lower level of the Fox Library. So start going through your closets now. For information, send an email to [maryellen@28Coolidge.com](mailto:maryellen@28Coolidge.com) or call Judy at 781-405-7451.

#### **Highrock Church Christmas Concert**

Fri. Dec. 12, 8pm or Sat/Sun. Dec. 13 & 14, 5pm, 735 Mass. Ave. Come listen to uplifting choral music and enjoy a Christmas celebration. 100% of the proceeds from this concert will be given to the Arlington Food Pantry. \$10/adult, \$5/seniors & children under 12, Info: [www.highrock.org](http://www.highrock.org)

#### **Little Fox Resale Shop**

Open Tues. & Thurs. 9am-12pm, Wed. 2:30-8pm, on the upper level of the Fox Library. Benefiting the Fox Library, the shop includes toys, books, children's gear, the shop as well as maternity clothes, kids shoes, games, and sports equipment. Info:  
[www.littlefoxshop.com](http://www.littlefoxshop.com).

### **Support Groups**

#### **40-something Mom's Group**

Suzan Wolpow, a licensed therapist with a specialty in women's issues and an older mom herself, has started a new group. This monthly discussion & support group for moms of babies &/or young children meets on 2nd Mon. of the month 9:30-11am in northwest Cambridge \$25/meeting. Info: 617-441-0758 or [www.yourclearvoice@msn.com](mailto:www.yourclearvoice@msn.com)

#### **AD/HD Support Group for Women**

New session begins in Jan., current session began in Sept., and meets Tues. 6-7:30pm twice a month in Lexington, cost is approx. \$50. Contact Heidi Lack, Ph.D., A.T.R.-BC, at 781-863-8696 for more info.

#### **Adoptive Families Chat & Play**

First Sat. of each month, 3:30-4:30pm, ISIS Maternity, Arl. A collaboration between Isis and ACONE, join us for an hour of playtime, support and networking. Children 0-3

welcome. PLEASE RSVP by contacting Becky Moyer at (617) 721-6783 or [beckym678@yahoo.com](mailto:beckym678@yahoo.com). Upcoming dates: 12/6, 1/3, 2/7, 3/7, 4/4

#### **Boston Babywearers**

2nd Tues. of each month, 10:30am-12:30pm, College Avenue United Methodist Church, 14 Chapel Street, Somerville, Rm 24 (ring bell once for entrance). Find the right baby carrier for you and/or learn how to use the carrier you own. Enjoy their carrier lending library too. Info: [www.bostonbabywearers.com](http://www.bostonbabywearers.com).

#### **Breastfeeding Drop-in Group**

Thurs. 3pm, Isis Maternity. For nursing moms and babies. Free. Staffed by certified lactation consultants. Info:  
[www.isismaternity.com](http://www.isismaternity.com).

#### **Grandparents' Support Group**

2nd Tues. of the month, 12-1:30pm. For grandparents who are primary caretakers of their grandchildren. Free. Info: 781-316-3410.

#### **Building a Healthy Lifestyle for Your Child**

Great Moves is offering a 4-week program for 3-5 year olds and their parents focusing on healthy cooking and fun physical activity! Each 90-minute session includes 45mins off movement and play and 45mins of cooking and eating. During the cooking portion of the program, the theme will be reinforced with a story read to the children as they eat. Parents will receive handouts or news articles on topics relevant to the nutrition topic of the day. Cost is \$250 for four weeks, 10% discount for ISIS members. New Sessions begin Tues. Jan. 13 and Wed. Jan. 14, 10:30am-12pm at 188 Needham St., Newton. Info: 617-928-0006

#### **La Leche League**

Dedicated to providing education, information, and support to breastfeeding women. Meetings in the basement of Fox Library on the 3rd Tues. of each month at 7:30pm, or 2nd Thurs. of the month at 10am in Cambridge (175 Harvey St.). Free. For info contact Heather 781-648-2988 or <http://www.lleus.org/web/ArlingtonCambridgeMa.html>

#### **Learn & Play Adoption Group**

For parents and adopted children ages 0-5yrs. Facilitated by First Connections. Community Agencies bldg., Emerson Hospital, 111 Old Rd. to 9-Acre Corner, Concord. Registration required \$30. Info: 978-287-0221 or [www.jri.org/cfys/](http://www.jri.org/cfys/).

#### **New Babies/New Mom's Group**

First time mothers bring infants up to 6 months old to meet with other mothers and a leader for support and discussion. New

sessions begin every few months. Info:  
[www.warmlines.org](http://www.warmlines.org).

#### **New Mothers' Drop-in Group**

For mothers with children under 1 year. Fri. 10-11:30am. Calvary United Methodist Church, 300 Mass. Ave. Arl. Free, non-sectarian, facilitated group. Sponsored by Jewish Family & Children's Svcs. Info: 617-558-1278.

#### **New Mother's Group**

Tues. 10:30am-12pm, Temple Isaiah, 55 Lincoln St, Lexington, Sponsored by the Parent Connection of BIDMC. Free 8-week sessions, Registration required. Info: 617-667-2229.

#### **Older First -Time Moms**

3rd Wed. of each month, 7pm Fox Library. Social and support group for first-time moms in their late 30s and 40s, Free. Suggested \$1 donation. Info: 781-674-2029.

#### **Postpartum Adjustment Support Group**

Fri. 1-2:30 in West Newton. Drop-in. Contact Haven Fyfe-Kiernan, MSW, LICSW to register (617-739-1022) or to discuss private therapy specializing in postpartum adjustment and parenting issues. Sponsored by Jewish Family & Children's Svcs.

#### **Postpartum Support Hotline**

The Postpartum Support International of MA telephone WARMLINE provides toll-free and confidential information, support and listings of local resources such as PPD groups and clinicians. A therapist volunteer covers the email of phone line and returns messages to individuals, family or friends, and professionals looking for mental health resources: 1-866-472-1897 or <http://postpartum.net/local-support/?state=MA>

#### **We Are Family**

3rd Thurs. of the month, 7-9pm Community Agencies bldg., Emerson Hospital, 111 Old Rd. to 9-Acre Corner, Concord. Support group for parents of older (3yrs.+) internationally adopted children or children previously in DSS custody. Info: 978-287-0221 or [www.jri.org/cfys](http://www.jri.org/cfys).

### **Specialty Classes and Playgroups**

#### **Spanish Playgroup for ages 1-8**

Formed by an Arlington-based group of parents, the age range is 1-8 yrs old. Spanish skill ranges from beginner to bilingual. Most of the families have one parent who speaks some Spanish. For info contact Deb Savage at [debsavage@juno.com](mailto:debsavage@juno.com).

**Arlington Family Connection**  
**P.O. Box 150**  
**Arlington, MA 02476**

**December, 2008**

## **AFC Membership/Renewal Form**

**New member**  **Renewal** Date: \_\_\_\_\_

**Gift membership from:** \_\_\_\_\_

Name(s): \_\_\_\_\_

Address: \_\_\_\_\_

City/State/Zip: \_\_\_\_\_

Email Address(es): \_\_\_\_\_

**AFC newsletters are sent out via email. If you prefer to receive a printed newsletter, please email or call us with your request and we will be happy to mail it to you.**

**Would you like to receive occasional AFC email?**

(e-bulletin, special event announcements, etc.)

Yes  No, please send the newsletter only

**Please list your child(ren):** (if applicable)

Name Gender Date of Birth (mo/year)

**School District:** (circle one for geographic location)

Bishop Brackett Dallin Hardy

Peirce Stratton Thompson Out-of-Town

**Would you like to be contacted about volunteering?**

Yes  No

**Volunteer Interests**

(check all that apply)

Events/Parties  New Parent Outreach

Newsletter  Outings with Kids  Playgroups

Outings without Kids  Seminars  Web Site

Email Bulletin  Childcare & Preschool Options

Publicity  Membership  Working Moms

Community Service  Kindergarten Connections

Treasurer/Clerk  Other \_\_\_\_\_

**Membership Fees:** All memberships renew in August, 2009 and begin September 1st for a flat \$20 per year.

**Sponsor Member (\$25).** Enjoy the usual membership benefits and make a donation to support new programs.

**Standard Member.** Circle the month you are joining:

\$20 (August/September/October)

\$15 (November/December/January)

\$10 (February/March/April)

\$5 (May/June/July)

Please mail membership form and check to:

Arlington Family Connection

P.O. Box 150

Arlington, MA 02476